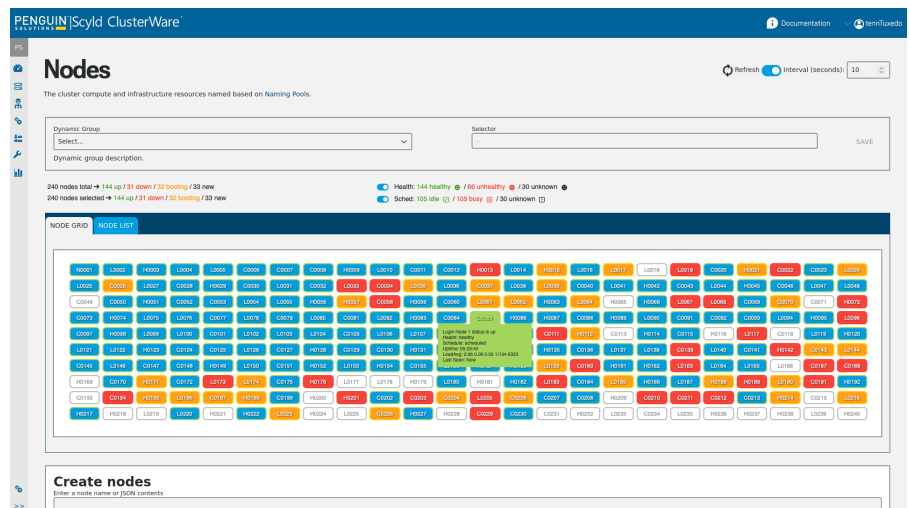


## Scyld ClusterWare Features

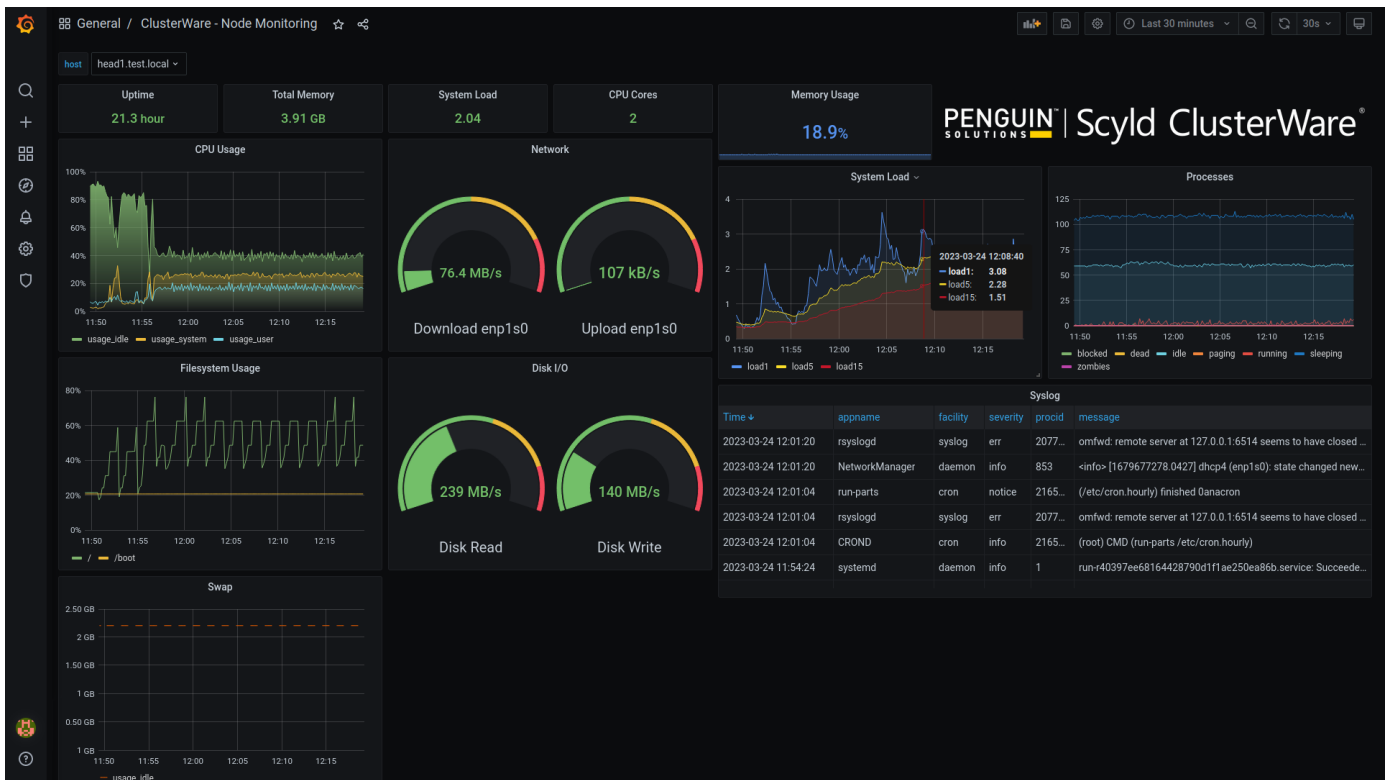
- ▶ Rapid image-based provisioning for fast cluster boot times
- ▶ Scalable from tens to many thousands of nodes
- ▶ Support for strictest security environments
- ▶ Integrate into Ansible-based IT environments for DevOps automation
- ▶ Node groups and attributes provide extensibility to build out heterogeneous compute environments
- ▶ Newly redesigned web GUI featuring monitoring dashboards and alerting tools
- ▶ Robust High Availability features to vastly reduce the effects of head node failure
- ▶ RHEL9 Support (including Rocky Linux 9)
- ▶ Wide variety of supported OSes for compute nodes
- ▶ Pre-bundled with supported middleware
- ▶ Enterprise support provided by HPC experts

Scyld ClusterWare<sup>®</sup> is a cluster management software that helps organizations tame the complexity of their HPC clusters and reach high productivity quickly. With our long history of HPC expertise, extensive vendor partnerships, and broad range of services, Penguin Computing is your ideal partner for delivering HPC and AI compute solutions.

Scyld ClusterWare provides an intelligent suite of management functionality, including node provisioning, image customization, and cluster monitoring, while serving as a platform for additional software and schedulers.



The ClusterWare web console features a node display, which allows admins to quickly get an overview of the cluster status. Admins can interact with nodes to see the associated attributes and other details



ClusterWare ships with Grafana for powerful, customizable health monitoring and alerting. Standard cluster-wide and node dashboards are provided.

## Tame the Complexity of HPC

There's no one-size-fits-all solution for cluster management. Job requirements, admin experience, cluster size, and security needs together present unique challenges for every cluster. ClusterWare's intuitive tools allow experienced admins to leverage their expertise, while making it easier for less experienced admins to manage their cluster efficiently.

## Flexible Management for any Environment

- ▶ A newly redesigned web-based GUI and a powerful CLI are supported, with RESTful API that give administrators many options for monitoring and management
- ▶ ClusterWare is scheduler-agnostic, supporting a variety of the most popular schedulers and workload managers, including Slurm, Torque, OpenPBS and Kubernetes
- ▶ New to version 12, ClusterWare can be packaged as container(s), allowing for greater ease of use and integration while allowing admins to interact with ClusterWare in the same way

## Highly Secure

Scyld ClusterWare is continually evolving to maintain the highest security standards, featuring:

- ▶ SELinux support, both targeted and MLS
- ▶ Support for FIPS 140-2
- ▶ Support for STIGs
- ▶ Support for air-gapped deployments
- ▶ TPM encryption support for LUKS

# Enterprise Software, Backed by HPC Experts

- ▶ ClusterWare is scalable to tens of thousands of nodes, and includes robust High Availability and security features, allowing admins to manage any environment with confidence
- ▶ Supported by a team of experts with decades of HPC experience
- ▶ We work closely with customers to build out our product roadmap and ensure our software will continue to evolve with users' needs

## See Scyld ClusterWare in Action

- ▶ [Sign Up](#) for a Demo or Evaluation of ClusterWare
- ▶ Reach out to us at [sales@penguincomputing.com](mailto:sales@penguincomputing.com)

## Learn More

Visit [www.penguincomputing.com](http://www.penguincomputing.com) to learn more about our software.

### ABOUT PENGUIN SOLUTIONS

## An **SGH**™ Brand

Penguin Solutions accelerates digital transformation with the power of emerging technologies in HPC, AI, and IoT with solutions and services that span the continuum of edge, core, and cloud.

Penguin Computing specializes in innovative and emerging technologies for the world's most demanding workloads.



© 2023 Penguin Computing, Inc. All rights reserved. Penguin Computing and Altus are trademarks or registered trademarks of Penguin Computing. All other product names, trademarks and registered trademarks are the property of their respective owners. All company, product and service names used in this document are for identification purposes only. Use of these names, trademarks and brands does not imply endorsement.